

## APPENDIX 1 CHILDREN & YOUNG PEOPLE IN HALTON

### Background Information to the Sustainable Community Strategy Partnership Indicators 2011/12 to 2015/16

Index:

Definition	Lead Partner	Responsible Officer	Page No.
1. Increase the percentage achieving 78+ points across EYFS with 6+ in CLL and PSE	HBC	Gill Bennett	2
2. Increase the percentage achieving Level 4+ at Key Stage 2 in English and Maths	HBC	Gill Bennett	3
3. Increase the percentage achieving 5+ GCSE's grades A*-C including English and Maths	HBC	Gill Bennett	4
4. Increase the percentage achieving Level 3 at 19	HBC	Simon Clough	5
5. Reduce the percentage of young people not in education, employment or training	HBC	Simon Clough	6
6. Reduce the percentage of children who are Obese in Year 6	PCT	Eileen O'Meara	7
7. Reduce the rate of children and young people admitted to hospital for substance misuse	HBC / PCT	Lorraine Crane	8
8. Increase the percentage of referrals where there is evidence of early help and support	HBC	Emma Taylor	9
9. Increase the percentage of educational settings with overall effectiveness of Good or Outstanding	HBC	Gill Bennett	10
10. Reduce the attainment gap between free school meals pupils and the Halton average at Key Stage 2	HBC	Gill Bennett	11
11. Reduce the attainment gap between free school meals pupils and the Halton average at Key Stage 4	HBC	Gill Bennett	12
12. Reduce the over-identification of Special Educational Needs at school action and school action plus	HBC	Jennifer John/Gill Bennett	13
13. Increase the percentage of young people progressing to Higher Education	HBC	Simon Clough	14
14. Increase the percentage of children with SEN or receiving enhanced provision achieving two levels progress	HBC	Jennifer John	15
15. Reduce the under 18 conception rate from the 2009 baseline	HBC	Lorraine Crane/John Bucknall	16
16. Increase the percentage of children in care achieving expected outcomes at Key Stage 2 and Key Stage 4	HBC	Chris Taylor/Gill Bennett	18
17. Reduce child and family poverty	Halton Borough Council/Job Centre Plus	Steve Nyakatawa	19

## APPENDIX 1 CHILDREN & YOUNG PEOPLE IN HALTON

Increase the percentage achieving 78+ points across EYFS with 6+ CLL and PSE																									
<p><b>Percentage achieving 78+pts across EYFS</b></p> <table border="1"> <caption>Data for Percentage achieving 78+pts across EYFS</caption> <thead> <tr> <th>Year</th> <th>Halton</th> <th>England</th> <th>SN</th> </tr> </thead> <tbody> <tr> <td>2008/09</td> <td>45.0</td> <td>48.5</td> <td>47.3</td> </tr> <tr> <td>2009/10</td> <td>47.0</td> <td>51.2</td> <td>51.2</td> </tr> <tr> <td>2010/11</td> <td>50.0</td> <td>55.7</td> <td>55.9</td> </tr> </tbody> </table>	Year	Halton	England	SN	2008/09	45.0	48.5	47.3	2009/10	47.0	51.2	51.2	2010/11	50.0	55.7	55.9	Lead Partner Agency:	Halton Borough Council							
	Year	Halton	England	SN																					
	2008/09	45.0	48.5	47.3																					
	2009/10	47.0	51.2	51.2																					
2010/11	50.0	55.7	55.9																						
Responsible Officer:	Gill Bennett																								
Good is:	Higher percentage																								
Brief Description / Indicator Purpose:																									
Percentage of all children who achieve 78 or more points at Early Years Foundation Stage with at least 6 points each across Communication, Language and Literacy and Personal, Social and Emotional scales.																									
Rationale: This indicator is a key attainment indicator, the data is readily available and we should be able to benchmark data against other areas and previous performance.																									
A new EYFS framework is to be introduced in September 2012 which will include a revised EYFS Profile. Targets can only be set on the current Profile areas. The last assessment against the current indicators will be undertaken in July 2012.																									
	2008/09	2009/2010	2010/2011	2011/2012	2012/2013	2013/2014	2014/2015	2015/2016																	
Halton Target	44.8	48.0	52.0	54.0	56.0	N/A	N/A	N/A																	
Halton Actual	45.0	47.0	50.0			N/A	N/A	N/A																	
<b>Benchmarking:</b>																									
All England	48.5	51.2	55.7																						
Northwest	N/A	N/A	N/A																						
Relevant Statistical Neighbours 1	47.3	51.2	55.9																						
<b>Supporting Commentary &amp; Target Rationale (2011 / 2012 Onwards):</b>																									
Trend for performance has been positive, although statistical neighbours have a higher average performance, and growth in Halton over the past couple of years has been at a lower rate than comparators.																									
This is a placeholder indicator and future indicator will be developed in line with the new framework once in place.																									

## APPENDIX 1 CHILDREN & YOUNG PEOPLE IN HALTON

Increase the percentage of children attaining level 4 or above in English and Maths at Key Stage 2																									
<p><b>Percentage achieving L4+ at KS2 Eng &amp; Maths</b></p> <table border="1"> <caption>Data for Percentage achieving L4+ at KS2 Eng &amp; Maths</caption> <thead> <tr> <th>Year</th> <th>Halton</th> <th>England</th> <th>SN</th> </tr> </thead> <tbody> <tr> <td>2008/09</td> <td>76.0</td> <td>73.0</td> <td>74.0</td> </tr> <tr> <td>2009/10</td> <td>74.0</td> <td>72.5</td> <td>73.8</td> </tr> <tr> <td>2010/11</td> <td>77.0</td> <td>74.0</td> <td>75.5</td> </tr> </tbody> </table>		Year	Halton	England	SN	2008/09	76.0	73.0	74.0	2009/10	74.0	72.5	73.8	2010/11	77.0	74.0	75.5	Lead Partner Agency:	Halton Borough Council						
		Year	Halton	England	SN																				
		2008/09	76.0	73.0	74.0																				
		2009/10	74.0	72.5	73.8																				
2010/11	77.0	74.0	75.5																						
Responsible Officer:	Gill Bennett																								
Good is:	Higher percentage																								
Brief Description / Indicator Purpose:																									
Percentage of all children who attain at least level 4 or above in English and Maths at Key Stage 2																									
Data is taken from KeyPas performance system and is available on an annual basis.																									
Rationale: This indicator is a key attainment indicator, the data is readily available and we should be able to benchmark data against other areas and previous performance.																									
This attainment indicator is included as part of the new floor standards.																									
	2008/09	2009/10	2010/11	2011/2012	2012/2013	2013/2014	2014/2015	2015/2016																	
Halton Target	N/A	77.0	79.0	80.0	81.0	81.0	81.5	82.0																	
Halton Actual	76.0	74.0	77.0																						
<b>Benchmarking:</b>																									
All England	73.0	72.5	74.0																						
Northwest	N/A	N/A	N/A																						
Relevant Statistical Neighbours <sup>2</sup>	74.0	73.8	75.5																						
<b>Supporting Commentary &amp; Target Rationale (2011 / 2012 Onwards):</b>																									
Trend for performance has been positive, with a slight dip in performance in 2009. Halton has consistently higher performance than statistical neighbours since 2008.																									
These are highly ambitious targets when considering that Halton is already outperforming against national and when you look at the current performance of the top ranked Local Authorities in the country, particularly the target for an increase of 3 percentage points by 2012/13.																									

<sup>2</sup> NFER Statistical Neighbours used by Ofsted

## APPENDIX 1 CHILDREN & YOUNG PEOPLE IN HALTON

Increase the percentage achieving 5+ A* - C including English & Maths																									
<p><b>Percentage achieving 5+GCSE's A*-C inc Eng &amp; Maths</b></p> <table border="1"> <caption>Graph Data</caption> <thead> <tr> <th>Year</th> <th>Halton</th> <th>England</th> <th>SN</th> </tr> </thead> <tbody> <tr> <td>2008/09</td> <td>49.3</td> <td>48.0</td> <td>43.2</td> </tr> <tr> <td>2009/10</td> <td>44.6</td> <td>51.0</td> <td>47.5</td> </tr> <tr> <td>2010/11</td> <td>50.1</td> <td>55.5</td> <td>52.3</td> </tr> </tbody> </table>	Year	Halton	England	SN	2008/09	49.3	48.0	43.2	2009/10	44.6	51.0	47.5	2010/11	50.1	55.5	52.3	Lead Partner Agency:	Halton Borough Council							
	Year	Halton	England	SN																					
	2008/09	49.3	48.0	43.2																					
	2009/10	44.6	51.0	47.5																					
2010/11	50.1	55.5	52.3																						
Responsible Officer:	Gill Bennett																								
Good is:	Higher percentage																								
Brief Description / Indicator Purpose:																									
Percentage of all children who attain at least five A* - C including English and Maths. Data is taken from KeyPas performance system and is available on an annual basis.																									
Rationale: This indicator is a key attainment indicator, the data is readily available and we should be able to benchmark data against other areas and previous performance.																									
This attainment indicator is included as part of the new floor standards.																									
	2008/09	2009/2010	2010/2011	2011/2012	2012/2013	2013/2014	2014/2015	2015/2016																	
Halton Target	44.0	49.0	52.3	54.0	55.5	56.0	56.5	57.0																	
Halton Actual	49.3	44.6	50.1																						
<b>Benchmarking:</b>																									
All England	47.9	50.8	55.1																						
Northwest	N/A	N/A	N/A																						
Relevant Statistical Neighbours <sup>3</sup>	43.2	47.5	52.3																						
<b>Supporting Commentary &amp; Target Rationale (2011 / 2012 Onwards):</b>																									
Trend for performance has been positive since 2006, with a dip in performance in 2009. Halton performed well against our statistical neighbours although remains slightly below the comparators.																									
These are highly ambitious targets to bring Halton in line with the national trend. Performance for this indicator must also be considered in combination with the progress indicators which also form part of the new floor standards.																									

<sup>3</sup> NFER Statistical Neighbours used by Ofsted.

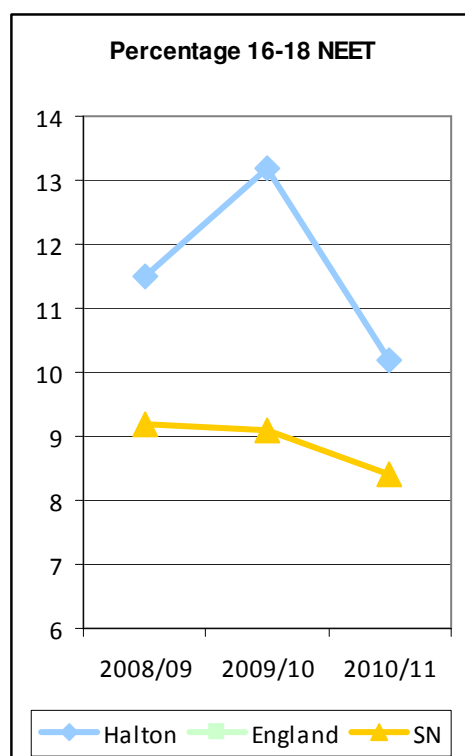
## APPENDIX 1 CHILDREN & YOUNG PEOPLE IN HALTON

Increase the percentage of young people achieving Level 3 at 19																									
<p><b>Percentage achieving level 3 by 19</b></p> <table border="1"> <caption>Data for Percentage achieving level 3 by 19</caption> <thead> <tr> <th>Year</th> <th>Halton</th> <th>England</th> <th>SN</th> </tr> </thead> <tbody> <tr> <td>2008/09</td> <td>33.6</td> <td>47.4</td> <td>40.3</td> </tr> <tr> <td>2009/10</td> <td>33.9</td> <td>49.4</td> <td>42.1</td> </tr> <tr> <td>2010/11</td> <td>42.3</td> <td>52.1</td> <td>45.5</td> </tr> </tbody> </table>	Year	Halton	England	SN	2008/09	33.6	47.4	40.3	2009/10	33.9	49.4	42.1	2010/11	42.3	52.1	45.5	Lead Partner Agency:	Halton Borough Council							
	Year	Halton	England	SN																					
	2008/09	33.6	47.4	40.3																					
	2009/10	33.9	49.4	42.1																					
2010/11	42.3	52.1	45.5																						
Responsible Officer:	Simon Clough																								
Good is:	Higher percentage																								
Brief Description / Indicator Purpose:																									
Percentage of all young people attaining level 2 by age 19 in Halton. $(X/Y) * 100$ . The calculation is performed at Local Authority level, where: X=The number of young people that were studying in the local authority at academic age 15, that have passed the level 3 threshold (i.e. achieved 100% of a level three)																									
Rationale: Achieving level 3 by the age of 19 increases the skills levels of the economy and allows participation into Higher Education and higher skilled employment.																									
	2008/09	2009/2010	2010/2011	2011/2012	2012/2013	2013/2014	2014/2015	2015/2016																	
Halton Target	38.9	40.5	42.2	44.0	45.0	50.0	52.0	55.0																	
Halton Actual	33.6	33.9	42.3																						
<b>Benchmarking:</b>																									
All England	47.4	49.4	52.1																						
Northwest	N/A	N/A	N/A																						
Relevant Statistical Neighbours <sup>4</sup>	40.3	42.1	45.5																						
<b>Supporting Commentary &amp; Target Rationale (2011 / 2012 Onwards):</b>																									
Halton whilst below the comparators has made significant progress in 2010/11. Further increases are likely as the level 3 intake continues to increase in line with the improved level 2 performance.																									

<sup>4</sup> NFER Statistical Neighbours used by Ofsted

## APPENDIX 1 CHILDREN & YOUNG PEOPLE IN HALTON

### Reduce the percentage of Young People not in education, employment or training (NEET)



NB England Data not available

Lead Partner Agency:	Halton Borough Council
Responsible Officer:	Simon Clough
Good is:	Lower percentage

#### Brief Description / Indicator Purpose:

Non-participation in education, employment or training after compulsory education is a major predictor of later unemployment, low income, depression, involvement in crime and poor mental health. Employment opportunities and training offers a number of key options to young people post-16 as they look for the best pathway going forward.

**Rationale:**  
Non-participation in employment or training between the ages of 16 and 18 is a major predictor of later unemployment, low income, depression, involvement in crime and poor mental health.

**Definition:**  
NEET is monitored using the average percentage of NEET at the end of November, December and January annually. Data source: Connexions NCCIS

	2008/09	2009/2010	2010/2011	2011/2012	2012/2013	2013/2014	2014/2015	2015/2016
Halton Target	9.9	8.8	7.7	10.5	9.5	8.5	8.0	7.0
Halton Actual	11.5	13.2	10.2					

#### Benchmarking:

	2008/09	2009/2010	2010/2011	2011/2012	2012/2013	2013/2014	2014/2015	2015/2016
All England	N/A	N/A	N/A					
Northwest	N/A	N/A	N/A					
Relevant Statistical Neighbours <sup>5</sup>	9.2	9.1	8.4					

#### Supporting Commentary & Target Rationale (2011 / 2012 Onwards):

Calculation of this indicator has changed from May 2011, and is now reported by academic year and residency in Halton. Essentially meaning that the number of NEET young people in school years 12, 13 and 14 who reside in Halton are being monitored with the effect that some 19 year olds now fall into the cohort. This has increased the cohort size by over 500 learners and increased NEET by 114 which under the new methodology has risen to 11.6%.

Although Halton has higher percentages than our statistical neighbours, performance is improving with a significant drop to 2010-11. However targets have been adjusted up in line with the change in methodology.

<sup>5</sup> NFER Statistical Neighbours used by Ofsted

## APPENDIX 1 CHILDREN & YOUNG PEOPLE IN HALTON

Reduce the percentage of children who are obese in years 6																												
<p><b>Percentage obese in Year 6</b></p> <table border="1"> <caption>Data for Percentage obese in Year 6</caption> <thead> <tr> <th>Year</th> <th>Halton</th> <th>SN</th> <th>England</th> <th>North West</th> </tr> </thead> <tbody> <tr> <td>2008/09</td> <td>21.8</td> <td>20.7</td> <td>18.3</td> <td>18.3</td> </tr> <tr> <td>2009/10</td> <td>22.2</td> <td>20.1</td> <td>18.9</td> <td>18.9</td> </tr> <tr> <td>2010/11</td> <td>21.6<sup>1</sup></td> <td>20.9</td> <td>18.7</td> <td>18.7</td> </tr> </tbody> </table>	Year	Halton	SN	England	North West	2008/09	21.8	20.7	18.3	18.3	2009/10	22.2	20.1	18.9	18.9	2010/11	21.6 <sup>1</sup>	20.9	18.7	18.7	Lead Partner Agency:	PCT						
	Year	Halton	SN	England	North West																							
	2008/09	21.8	20.7	18.3	18.3																							
	2009/10	22.2	20.1	18.9	18.9																							
2010/11	21.6 <sup>1</sup>	20.9	18.7	18.7																								
Responsible Officer:	Eileen O'Meara																											
Good is:	<ul style="list-style-type: none"> <li>A reduction in the proportion of obese children over time,</li> <li>A minimum of 85% of eligible pupils being measured.</li> </ul>																											
Brief Description / Indicator Purpose:																												
The percentage of children in reception who are obese, as shown by the National Child Measurement Programme (NCMP).																												
Data is reported one year in arrears.																												
For the purposes of this indicator, children are defined as obese if their body-mass index (BMI) is above the 95th centile of the reference curve for their age and sex according to the UK BMI centile classification (Cole TJ, Freeman JV, Preece MA. Body mass index reference curves for the UK, 1990. 1995; <b>73</b> : 25–29). A child's height (in metres), weight (in kilograms), date of birth and sex are needed to calculate their BMI.																												
	2008/09	2009/2010	2010/2011	2011/2012	2012/2013	2013/2014	2014/2015	2015/2016																				
Halton Target	21.3	21.3	21.3	22.0	21.5	21.0	20.5	20.0																				
Halton Actual	21.8	22.2	21.6 <sup>1</sup>	23.7																								
<b>Benchmarking:</b>																												
All England	18.3	18.3	18.7																									
Northwest	18.3	18.9	18.7																									
Relevant Statistical Neighbours <sup>6</sup>	20.7	20.1	20.9																									
Data collected	Academic Year 2007/08	Academic Year 2008/09	Academic Year 2009/10																									
<b>Supporting Commentary &amp; Target Rationale (2011 / 2012 Onwards):</b>																												
Halton's performance for 2010 has show fluctuation with a continued variable trend over the last few years.																												
Halton remains above the national and north west average. Halton shows an increasing obesity rate in line with increasing obesity rates for the England and North West averages.																												
Agreed target should be retained as obesity rates in Halton are still high, now including obesity at reception																												
Targets discussed and reviewed at the Health SSP Performance Group on 1.9.2011 by Eileen O' Meara on 1.9.2011 to 2011/12 to 2015/16 and subsequently updated on receipt of the latest published 2010/11 Obesity rate for September 2010/11 23.7% .																												
Note 1 – Based on September 2009/10 NCMP NHS IC																												

<sup>6</sup> NFER Statistical Neighbours used by Ofsted

## APPENDIX 1 CHILDREN & YOUNG PEOPLE IN HALTON

Reduce the rate of Children & Young People admitted to hospital for substance misuse																							
<p><b>Rate of hospital admissions related to substance misuse per 10,000<sup>7</sup></b></p> <table border="1"> <caption>Data for Rate of hospital admissions related to substance misuse per 10,000</caption> <thead> <tr> <th>Year</th> <th>Rate</th> </tr> </thead> <tbody> <tr> <td>2005/06</td> <td>380</td> </tr> <tr> <td>2006/07</td> <td>440</td> </tr> <tr> <td>2007/08</td> <td>480</td> </tr> <tr> <td>2008/09</td> <td>500</td> </tr> <tr> <td>2009/10</td> <td>490</td> </tr> <tr> <td>2010/11</td> <td>470</td> </tr> </tbody> </table>	Year	Rate	2005/06	380	2006/07	440	2007/08	480	2008/09	500	2009/10	490	2010/11	470	Lead Partner Agency:	Halton Borough Council/ PCT							
	Year	Rate																					
	2005/06	380																					
	2006/07	440																					
	2007/08	480																					
2008/09	500																						
2009/10	490																						
2010/11	470																						
Responsible Officer:	Lorraine Crane																						
Good is:	Lower rate																						
Brief Description / Indicator Purpose:																							
<p>One of the commissioning priorities for the Children and Families Commissioning Partnership is to reduce substance misuse and this is a key outcome indicator to represent progress.</p> <p>This indicator measures the percentage of the hospital admissions for 0-16 years olds where substance misuse is coded as reason for admission per 10,000.</p> <p>The target is a year on year reduction of 5%.</p> <p>This indicator will include alcohol admissions ( Collette Walsh ) .</p>																							
	2008/09	2009/2010	2010/2011	2011/2012	2012/2013	2013/2014	2014/2015	2015/2016															
Halton Target	N/A	N/A	N/A	-5.0%	-5.0%	-5.0%	-5.0%	-5.0%															
Halton Actual	1372	1351	1277																				
<b>Benchmarking:</b>																							
All England	Local measure																						
Northwest																							
Relevant Statistical Neighbours <sup>7</sup>																							
<b>Supporting Commentary &amp; Target Rationale (2011 / 2012 Onwards):</b>																							
<p>There are a number of developments to interventions Halton has implemented around this indicator including restructuring the specialist treatment service, developing treatment processes to ensure current treatment plans are aimed towards successful transition back into education, employment, training and recovery. The mobile outreach service (VRMZ) is actively engaging with young people in 'hotspot' areas, who currently do not access services. A wide range of provision will be delivered from this mobile service including a range of drug and alcohol interventions.</p>																							

<sup>7</sup> NFER Statistical Neighbours used by Ofsted

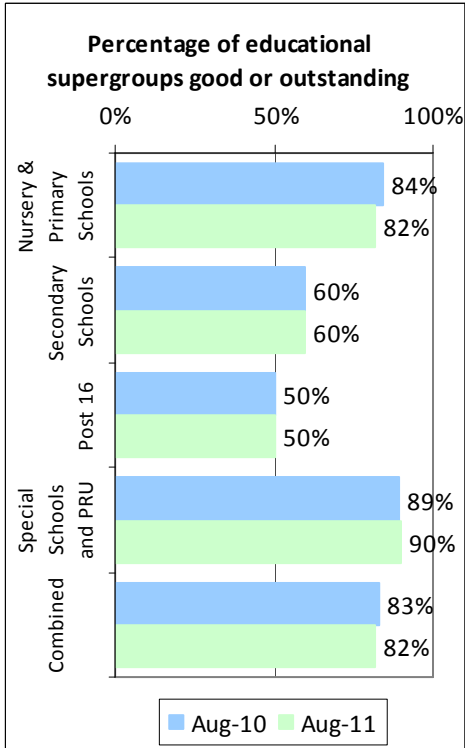


## APPENDIX 1 CHILDREN & YOUNG PEOPLE IN HALTON

Increase the percentage of referrals where there is evidence of early help and support (CAF)																									
<p><b>Percentage of referrals with evidence of early help and support</b></p> <table border="1"> <caption>Data for Percentage of referrals with evidence of early help and support</caption> <thead> <tr> <th>Year</th> <th>Halton</th> <th>England</th> <th>SN</th> </tr> </thead> <tbody> <tr> <td>2008/09</td> <td>0</td> <td>0</td> <td>0</td> </tr> <tr> <td>2009/10</td> <td>0</td> <td>0</td> <td>0</td> </tr> <tr> <td>2010/11</td> <td>3.8</td> <td>0</td> <td>0</td> </tr> </tbody> </table>	Year	Halton	England	SN	2008/09	0	0	0	2009/10	0	0	0	2010/11	3.8	0	0	Lead Partner Agency:	Halton Borough Council							
	Year	Halton	England	SN																					
	2008/09	0	0	0																					
	2009/10	0	0	0																					
2010/11	3.8	0	0																						
Responsible Officer:	Emma Taylor																								
Good is:	Higher percentage																								
Brief Description / Indicator Purpose:																									
<p>It is expected that through the Team Around the Family work, more children will benefit from earlier help and support, and therefore only escalate appropriately to Children's Social Care once early help and support has been provided and a statutory intervention is required. As a result, more of the referrals to social care will have evidence of this earlier help and support. It is also expected that there will be less families requiring this statutory support as children will have their needs met at an earlier stage.</p> <p>As a proxy for early help and support this indicator relates to those children and young people who have had a CAF within the previous 12 months of the referral.</p> <p>Given data quality issues in relation to CAF prior to 2010, no prior data has been provided.</p> <p>Data is not comparable with other Local Authorities as not reported nationally.</p>																									
	2008/09	2009/2010	2010/2011	2011/2012	2012/2013	2013/2014	2014/2015	2015/2016																	
Halton Target	N/A	N/A	N/A	15.0	30.0	40.0	45.0	50.0																	
Halton Actual	N/A	N/A	3.8																						
<b>Benchmarking:</b>																									
All England	N/A	N/A	N/A																						
Northwest	N/A	N/A	N/A																						
Relevant Statistical Neighbours <sup>8</sup>	N/A	N/A	N/A																						
<b>Supporting Commentary &amp; Target Rationale (2011 / 2012 Onwards):</b>																									
<p>Targets set are provisional awaiting more data to see expected trends and whether the trajectory is realistic.</p> <p>NB targets are adjusted from those set in the Directorate Plan which were set based on inaccurate data.</p>																									

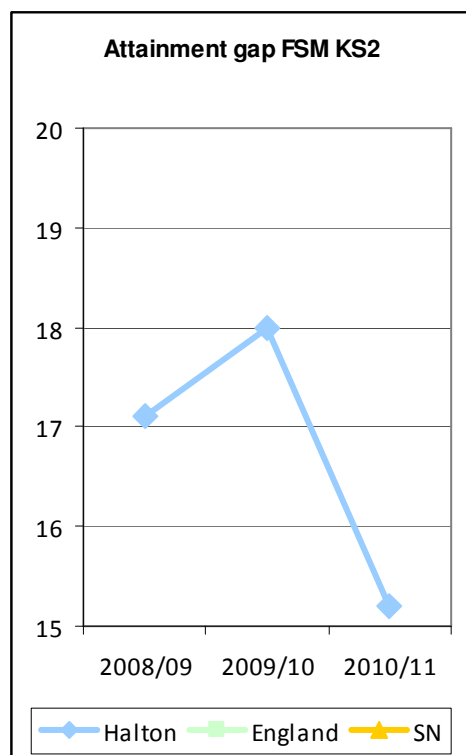
<sup>8</sup> NFER Statistical Neighbours used by Ofsted

## APPENDIX 1 CHILDREN & YOUNG PEOPLE IN HALTON

Increase the percentage of educational settings with overall effectiveness Good or Outstanding									
 <p><b>Percentage of educational supergroups good or outstanding</b></p> <p>0% 50% 100%</p> <p>Nursery &amp; Primary Schools: 84% (Aug-10), 82% (Aug-11)</p> <p>Secondary Schools: 60% (Aug-10), 60% (Aug-11)</p> <p>Post 16: 50% (Aug-10), 50% (Aug-11)</p> <p>Special Schools and PRU: 89% (Aug-10), 90% (Aug-11)</p> <p>Combined: 83% (Aug-10), 82% (Aug-11)</p> <p>Legend: Aug-10 (Blue), Aug-11 (Green)</p>	Lead Partner Agency:	Halton Borough Council							
	Responsible Officer:	Gill Bennett							
	Good is:	Higher percentage							
	Brief Description / Indicator Purpose:								
<p>This measure is designed to monitor progress of settings against the Ofsted Inspection framework and is required as part of the Children's Services Assessment. To meet the criteria for Performs Well they need to meet the 65% threshold.</p> <p>This information is the percentages according to the information submitted to Ofsted as part of the factual accuracy notes and does not include all settings as those not inspected since restructure are excluded.</p> <p>Please note due to the numbers of nursery and primary school settings they have a disproportionate effect on the overall figure provided below.</p>									
	2008/09	2009/2010	2010/2011	2011/2012	2012/2013	2013/2014	2014/2015	2015/2016	
Halton Target					84.0	84.5	85.0	86.0	
Halton Actual			83.0	81.5					
<b>Benchmarking:</b>									
All England Primary			65%						
Secondary			60%						
Special			78%						
All Schools			65%						
<b>Supporting Commentary &amp; Target Rationale (2011 / 2012 Onwards):</b>									
<p>Target is challenging, given the number of nursery and primary provision included in the denominator, however improving performance is specifically to be focussed on Secondary and Post 16 settings.</p>									

## APPENDIX 1 CHILDREN & YOUNG PEOPLE IN HALTON

Reduce the attainment gap between pupils in receipt of free school meals and the Halton average at Key Stage 2 (NI102a)



England and SN data not available

Lead Partner Agency:	Halton Borough Council
Responsible Officer:	Gill Bennett
Good is:	Lower number
<b>Brief Description / Indicator Purpose:</b>	
Free school meals is a proxy measure to identify poverty and given deprivation levels in Halton this measure seeks to monitor and narrow the attainment gap between those in receipt of free school meals and the Halton average at Key Stage 2.	

	2008/09	2009/2010	2010/2011	2011/2012	2012/2013	2013/2014	2014/2015	2015/2016
Halton Target	N/A	N/A	12.0	12.0	12.0	11.5	11.5	11
Halton Actual	17.1	18.0	15.2					
<b>Benchmarking:</b>								
All England	N/A	N/A	N/A					
Northwest	N/A	N/A	N/A					
Relevant Statistical Neighbour <sup>9</sup>	N/A	N/A	N/A					

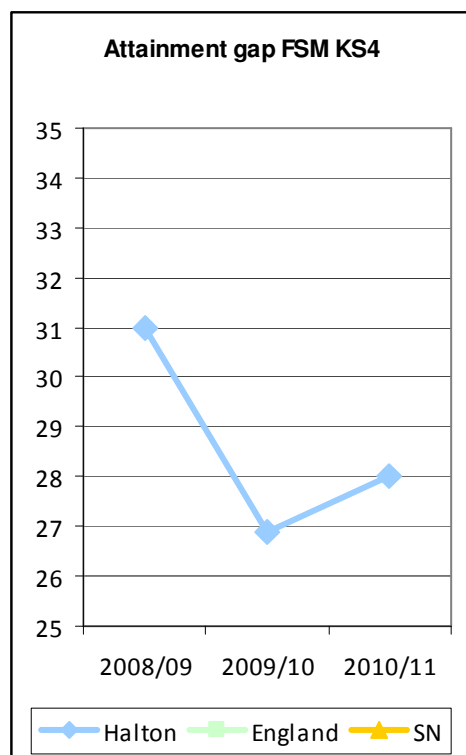
### Supporting Commentary & Target Rationale (2011 / 2012 Onwards):

Targets set are to continue the improvement previously seen to reduce the gap by 7 percentage points from the 2009/10 performance

<sup>9</sup> NFER Statistical Neighbours used by Ofsted

## APPENDIX 1 CHILDREN & YOUNG PEOPLE IN HALTON

Reduce the attainment gap between pupils in receipt of free school meals and the Halton average at Key Stage 4 (NI102b)



England and SN data not available

Lead Partner Agency:	Halton Borough Council
Responsible Officer:	Gill Bennett
Good is:	Lower number
<b>Brief Description / Indicator Purpose:</b>	
Free school meals is a proxy measure to identify poverty and given deprivation levels in Halton this measure seeks to monitor and narrow the attainment gap between those in receipt of free school meals and the Halton average at Key Stage 4.	

	2008/09	2009/2010	2010/2011	2011/2012	2012/2013	2013/2014	2014/2015	2015/2016
Halton Target	N/A	N/A	22.0	26.0	24.0	23.0	22.0	20.0
Halton Actual	31.0	26.9	28.0					
<b>Benchmarking:</b>								
All England	N/A	N/A	N/A					
Northwest	N/A	N/A	N/A					
Relevant Statistical Neighbours <sup>10</sup>	N/A	N/A	N/A					

### Supporting Commentary & Target Rationale (2011 / 2012 Onwards):

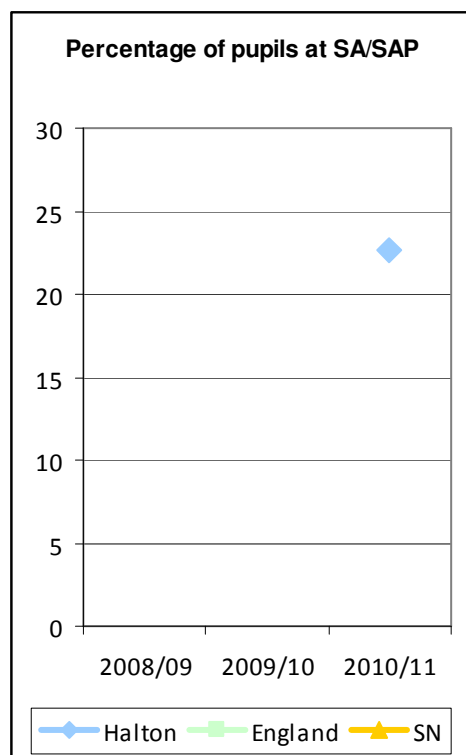
Targets adjusted for 2011/12 in line with latest performance.

The targets represent a significant challenge over the five year period to reduce the gap in attainment for free school meals pupils.

<sup>10</sup> NFER Statistical Neighbours used by Ofsted

## APPENDIX 1 CHILDREN & YOUNG PEOPLE IN HALTON

### Reduce the over-identification of Special Educational Needs at School Action and School Action Plus



Lead Partner Agency:	Halton Borough Council
Responsible Officer:	Jennifer John/Gill Bennett
Good is:	Lower

#### Brief Description / Indicator Purpose:

Proxy indicator used to measure this is the percentage of pupils with School Action and School Action Plus as measured in the Schools Census.

Through reducing over-identification of SEN at these levels individual outcomes for children and young people will be improved as resources are targeted more appropriately for children with additional needs.

Whilst over-identification is challenging to measure, the overall percentage will reduce should work to reduce over-identification be successful. Please note children who should be identified will still receive the appropriate support.

	2008/09	2009/2010	2010/2011	2011/2012	2012/2013	2013/2014	2014/2015	2015/2016
Halton Target				21.4	20.2	19.0	18.0	17.0
Halton Actual			22.6					

#### Benchmarking:

All England	N/A	N/A	N/A					
Northwest	N/A	N/A	N/A					
Relevant Statistical Neighbours <sup>11</sup>	N/A	N/A	N/A					

#### Supporting Commentary & Target Rationale (2011 / 2012 Onwards):

Target has been set to reduce Halton's position in line with the regional average which is anecdotally known as around 17%. Unfortunately due to a lack of published data this is known anecdotally only.

<sup>11</sup> NFER Statistical Neighbours used by Ofsted

## APPENDIX 1 CHILDREN & YOUNG PEOPLE IN HALTON

Increase the percentage of Young People progressing to higher education.																	
<p><b>Percentage 16-19 attending FE</b></p> <table border="1"> <caption>Data for Percentage 16-19 attending FE</caption> <thead> <tr> <th>Year</th> <th>Percentage</th> </tr> </thead> <tbody> <tr> <td>2007/08</td> <td>21.5</td> </tr> <tr> <td>2008/09</td> <td>21.0</td> </tr> <tr> <td>2009/10</td> <td>23.5</td> </tr> </tbody> </table>	Year	Percentage	2007/08	21.5	2008/09	21.0	2009/10	23.5	Lead Partner Agency:	Halton Borough Council							
	Year	Percentage															
	2007/08	21.5															
	2008/09	21.0															
2009/10	23.5																
Responsible Officer:	Simon Clough																
Good is:	Higher percentage																
Brief Description / Indicator Purpose:																	
This indicates the number of students domiciled from Halton aged 16 to 19 at UK Higher Education institutions against the 16 to 19 population in Halton. (HESA Student Returns)																	
No comparator information is available for this return.																	
	2008/09	2009/2010	2010/2011	2011/2012	2012/2013	2013/2014	2014/2015	2015/2016									
Halton Target	N/A	N/A	24.0	25.0	25.0	25.0	25.0	25.0									
Halton Actual	20.8	22.9															
<b>Benchmarking:</b>																	
All England	N/A	N/A	N/A														
Northwest	N/A	N/A	N/A														
Relevant Statistical Neighbours <sup>12</sup>	N/A	N/A	N/A														
<b>Supporting Commentary &amp; Target Rationale (2011 / 2012 Onwards):</b>																	
<p>A small increase is expected for 10/11 and 11/12 supported by an increase in level 3 performance. 2011 is the last intake before university fees increase significantly which is likely to impact negatively on further increases. This measure will need revising in 12/12 to include level 4 and level 5 qualifications which will provide a better indicator of the contribution to sustainable communities.</p>																	

<sup>12</sup> NFER Statistical Neighbours used by Ofsted

## APPENDIX 1 CHILDREN & YOUNG PEOPLE IN HALTON

Increase the percentage of children with Statements of Special Educational Needs or receiving enhanced provision achieving two levels progress								
No data until 2011/12  <b>Placeholder</b>	Lead Partner Agency:		Halton Borough Council					
	Responsible Officer:		Jennifer John					
	Good is:		Higher percentage					
	Brief Description / Indicator Purpose:							
	This measure will monitor the progress made by children subject to special educational needs and those receiving enhanced provision as identified by the Local Authority. Measuring their progress is now a requirement of the resource bases and first measurement will commence in 2011/12. Targets will then be set from the baseline position provided from this measurement.							
	2008/09	2009/2010	2010/2011	2011/2012	2012/2013	2013/2014	2014/2015	2015/2016
Halton Target				Baseline Year	Increasing % achieving two levels of progress			
Halton Actual								
<b>Benchmarking:</b>								
All England								
Northwest								
Relevant Statistical Neighbours <sup>13</sup>								
<b>Supporting Commentary &amp; Target Rationale (2011 / 2012 Onwards):</b>								
<p>This measure has been agreed as a placeholder indicator and targets are to be set once 2011/12 data is confirmed.</p>								

<sup>13</sup> NFER Statistical Neighbours used by Ofsted

## APPENDIX 1 CHILDREN & YOUNG PEOPLE IN HALTON

Reduction in the Under 18 conception (new local measure definition for NI 112)								
	Lead Partner		Halton Borough Council					
	Agency:							
	Responsible Officer:		Lorraine Crane/John Bucknall					
	Good is:		A reducing rate from the baseline year.					
Brief Description / Indicator Purpose:								
Previous guidance defines the national target to reduce the under 18 conception % rate by 50% by 2010 (compared to the 1998 baseline rate) as part of a broader strategy to improve sexual health. (Target shared between the Department of Health and the Department for Children, Schools and Families.) The old definition is graphed opposite .								
To make this measure more meaningful this target will be monitored as a reduction in the rate per thousand rolling quarterly average annual rate from the 2009 baseline, and actual numbers of conceptions								
	2008/09	2009/2010	2010/2011	2011/2012	2012/2013	2013/2014	2014/2015	2015/2016
Halton Target	Previously used a % reduction against the 1998 baseline in line with NI definition			58.1 Rolling Quarterly Av Rate Reduction of 1.43% = Two conceptions	Reduction of 3%	Reduction of 3%	Reduction of 3%	Reduction of 3%
Halton Actual	70.5 Rolling Quarterly Av. Rate (Dec 07)	52.6 Rolling Quarterly Av. Rate (Dec 08)	58.9 Rolling Quarterly Av. Rate (Dec09)= 140 conceptions	NA				
<b>Benchmarking:</b>								
Rate per 100 All England	41.8	40.5	38.2	N/A				
Rate per 1000 Northwest	47.2	45.9	47.3					
<b>Supporting Commentary &amp; Target Rationale (2011 / 2012 Onwards):</b>								
This is still a significant area of concern in Halton and it is therefore recommended that this target be retained.								
The above table has been obtained from the Ofsted Performance Profile, showing the % change from the 1998 baseline of 47.3 conceptions per 1000 in 1998.								
Halton's performance for 2010 has shown a significant drop in performance, with increases noted in the number of conceptions. Good performance is typified by a higher percentage reduction from the baseline year.								
Halton remains considerably above the national average. At December 2009 (last published data) the England average was 38.2 per 1000 and the Regional average was 47.3 per 1000. Thus, a target of 21.3 conceptions per 1000 in 2010/11 (-55% from the 1998 baseline of 47.3 per 1000) was highly stretched.								

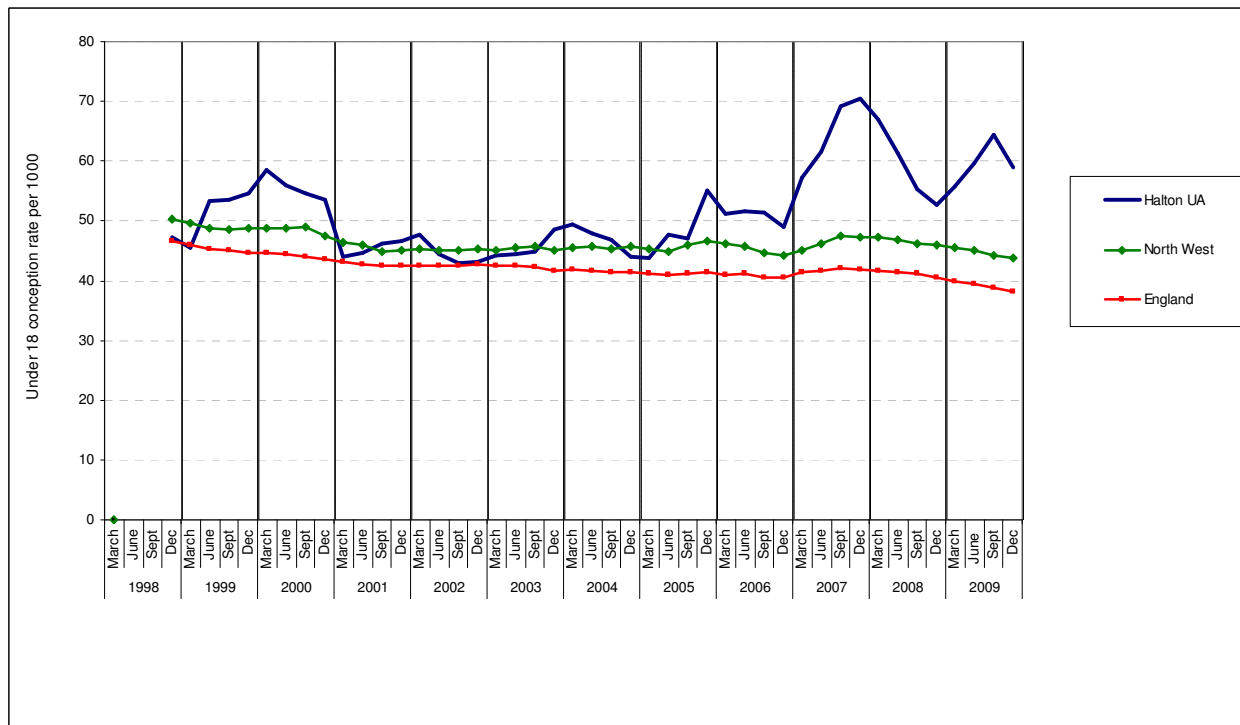


## APPENDIX 1 CHILDREN & YOUNG PEOPLE IN HALTON

The target was discussed and agreed by Children's & Enterprise SMT on 20.7.2011

Halton has made a decision to use 2009 figures as a baseline in setting future targets for this area. Given that data is available in arrears, quarter 1 of 2011/12 relating to the latest information for the quarter ended March 2010, the target is to see a reduction of a reduction of 2 conceptions by Dec 2010. This equates to 1.43% reduction in the total conceptions for 2010 (140 conceptions) of the 2374 girls aged 15-17 in Halton) and then 3% year on year with a caveat to review.

The decision has also been made to monitor under 16's and 2<sup>nd</sup> conceptions but the under 18 conceptions will remain the overarching priority.



	2005	2006	2007	2008	2009	2010
Halton UA Total Population	2,537	2,553	2,539	2,492	2,374	2,281 Mar 2010
Average no. of conceptions per quarter (Rounded)	35	31	45	33	35	Not available

The latest ONS for Halton in Quarter 1 of 2010 is 60.7 rolling quarterly average per 1000 girls aged between 15 and 17. This equates to 40 actual births. The impact of seasonal variations will continue to be closely monitored and action targeted.

## APPENDIX 1 CHILDREN & YOUNG PEOPLE IN HALTON

Increase the percentage of children in care achieving their expected outcomes at Key Stage 2 and Key Stage 4								
		Lead Partner Agency:		Halton Borough Council				
		Responsible Officer:		Chris Taylor/ Gill Bennett				
		Good is:		Higher percentage				
		Brief Description / Measure Purpose:						
		<p>This measure has been chosen to ensure that all children in care are supported to achieve their expected outcomes at these key stages of attainment.</p> <p>This is a new local measure and therefore 2011/12 data will be the baseline year from which targets can be set in future.</p>						
	2008/09	2009/2010	2010/2011	2011/2012	2012/2013	2013/2014	2014/2015	2015/2016
Halton Target				Baseline Year	Increasing % of children in care achieving their expected outcomes			
Halton Actual								
<b>Benchmarking:</b>								
All England								
Northwest								
Relevant Statistical Neighbour <sup>14</sup>								
<b>Supporting Commentary &amp; Target Rationale (2011 / 2012 Onwards):</b>								
This is a placeholder indicator and targets to be set once 2011/12 data is confirmed.								

<sup>14</sup> NFER Statistical neighbours used by Ofsted

## APPENDIX 1 CHILDREN & YOUNG PEOPLE IN HALTON

Reduce child and family poverty								
<b>Placeholder 2012/13</b>	Lead Partner Agency:		Halton Borough Council/Job Centre Plus					
	Responsible Officer:		Steve Nyakatawa					
	Good is:		Reducing the level of child and family poverty.					
	Brief Description / Measure Purpose:							
This is a placeholder until a suitable indicator and data source has been identified.								
	2008/09	2009/2010	2010/2011	2011/2012	2012/2013	2013/2014	2014/2015	2015/2016
Halton Target					Place holder - measure and target to be determined			
Halton Actual								
<b>Benchmarking:</b>								
All England								
Northwest								
Relevant Statistical Neighbour <sup>15</sup>								
<b>Supporting Commentary &amp; Target Rationale (2011 / 2012 Onwards):</b>								
This measure also links to the Child Poverty Strategy								

<sup>15</sup> NFER Statistical neighbours used by Ofsted